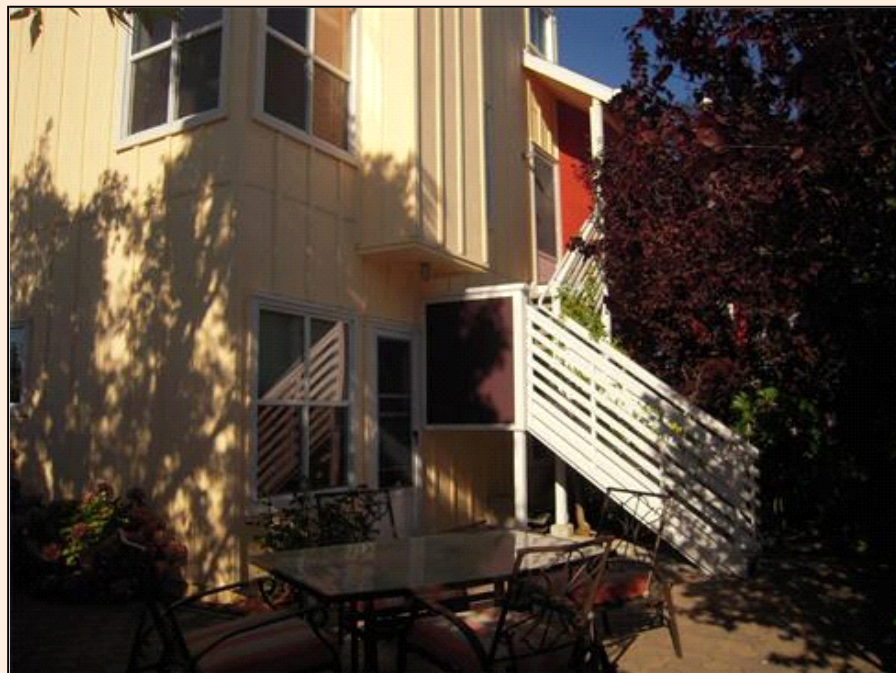


2060 S DELAWARE ST San Mateo

Terrific Entry Level Home!

PROPERTY DETAILS



Listing Price: **\$525,000**

Listing Address: 2060 S DELAWARE ST
San Mateo CA 94403

Bedrooms: 2

Full Baths: 2

Partial Baths: 0

SQ FT: 1320

Lot Size: Common Interest

Style: End Townhouse with 2 Car Garages

Garage: 2 Car

Heat Source: Electric

Schools: San Mateo

QR Code:

On a SmartPhone?
Scan the QR code
to see this listing



PROPERTY DESCRIPTION

www.2060Delaware.com

Terrific entry level home. This is a tri-level end unit townhome that feels like a single family home and offering lots of privacy.

- * *Best set up in complex.*
- * *Excellent central location on Peninsula. Minutes from Hwy 101 and 92.*
- * *Walk to shops and restaurants. Beautifully updated, open, light and bright with high ceilings.*
- * *Parquet floors in LR & DR.*
- * *Kitchen features Silestone countertops with refinished cabinetry and stainless appliances.*
- * *Great floor plan, ideal for home office.*

Fabulous End Unit townhome with its own patio. Can be 3 bedrooms. Best set up in complex. Excellent central location on Peninsula. Minutes from Hwy 101 and 92. Walk to shops and restaurants. Beautifully updated, open, light and bright with high ceilings. Parquet floors in LR & DR. Kitchen features Silestone countertops with refinished cabinetry and stainless appliances. Master bathroom is updated and spacious. Great floor plan, ideal for home office or in-law set up. Two bedrooms on main level including master suite with dual closets and one loft bedroom at upper level. Very spacious living areas. Great access to patio which is ideal for those Fall BBQs. Views of Western hills offering beautiful sunsets. Lots of storage. Only unit on the market in complex. Complex features security gate and two garages. This unit offers a lot of privacy and is very unique.

Bedrooms

Two bedrooms down and one loft bedroom up

Living Areas

Spacious living room with soaring ceilings and lots of windows. Featuring parquet flooring.

Dining Area

Separate dining area also features parquet flooring and is ideally set up adjacent to living room & kitchen

Kitchen

Beautifully upgraded with Silestone countertops, refinished cabinetry and stainless top of the line appliances. Ideal for that avid cook.

Complex Features

Security Gated entry. 2-car garages. Lots of privacy.

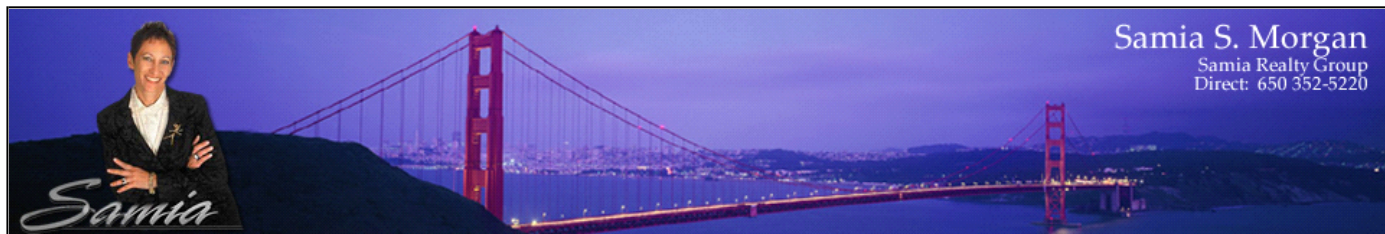
Association Dues

Low dues at \$275.

CONTACT INFORMATION



Samia S. Morgan, Inc.
dba Samia Realty Group
move2ca.com
7 W 41st Ave #411
San Mateo CA 94403
650-352-5220
samia@samiamorgan.com



Equal Housing Opportunity

Property information deemed reliable but not guaranteed and should be verified.

Copyright © 2003-2012 Real Pro Systems LLC. All rights reserved.